

VIENNA HOUSE BY WYNDHAM

Endless Exploration

VIENNA HOUSE BY WYNDHAM AMBER BALTIC MIEDZYDZROJE

VIENNA HOUSE
BY WYNDHAM



INSPIRE

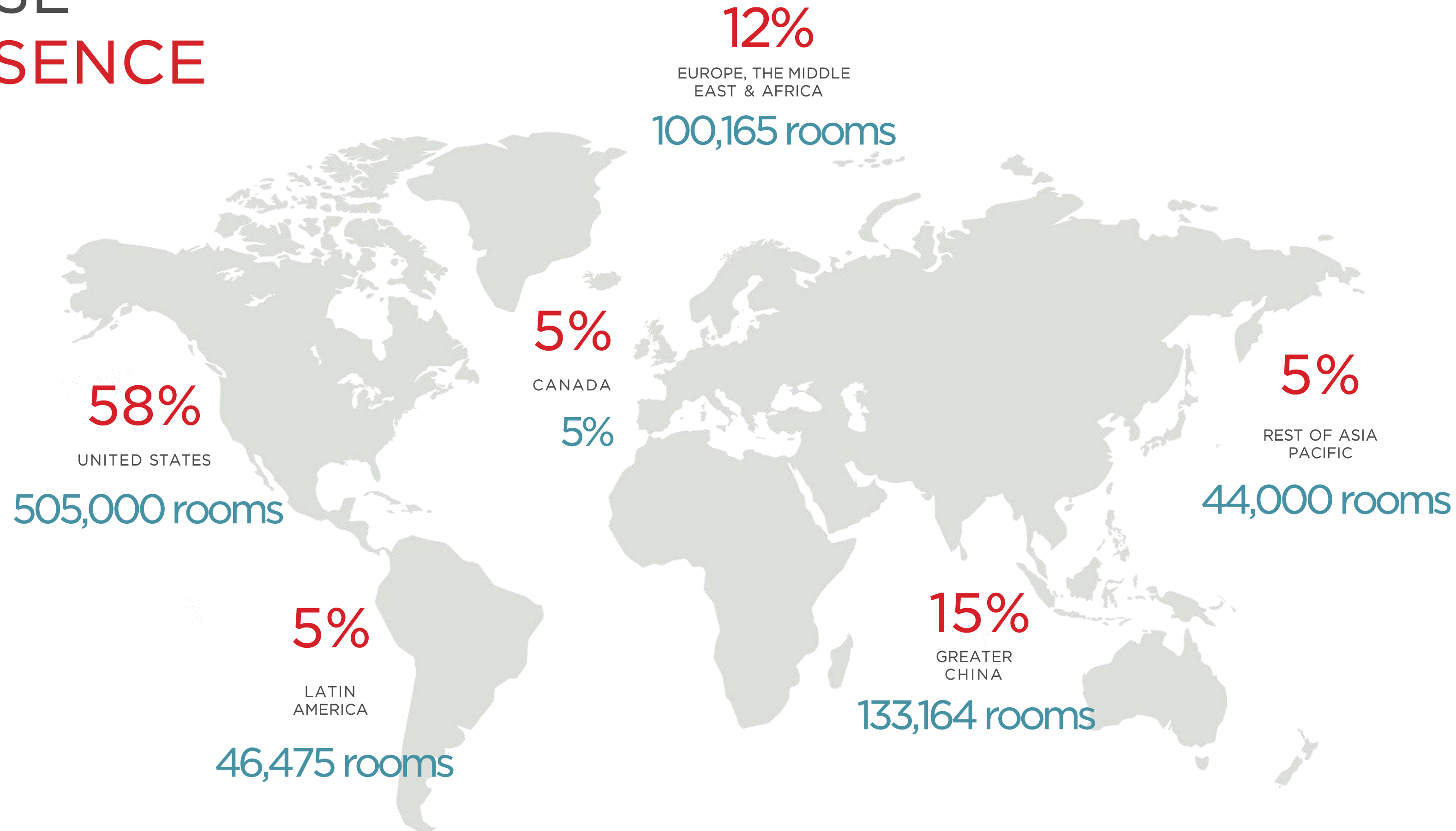
WANDERLUST



WARMTH



VIENNA HOUSE GLOBAL PRESENCE



VIENNA HOUSE
BY WYNDHAM

Q4 2025 results

REQUIREMENTS

PARAMETERS	DETAILS
TYPE	New Construction and Conversion
GUESTS	Business & Leisure Travellers
CATEGORY	Lifestyle
LOCATION	Urban, Suburban & Airport
GEOGRAPHY	Europe
ROOMS	100+
AMENITIES	<ul style="list-style-type: none">• Free Continental breakfast with hot items• Gym size of min 100m² subject to size of property• All day dining and lobby bar• Boardrooms and meeting facilities subject to market conditions



TYPICAL INTERIOR DESIGN MOODS

Every room is a canvas, with space for growth and creativity. A precious vision of sophistication and simplicity, create the most wonderful energy. There is a daring and venturous blend of textures and colours with intense shades of spicy ruby, sensual amber, deep blue and forest green.

VIENNA HOUSE

BY WYNDHAM

- Eccentric but absolutely enjoyable.
- Creative, yet airy.



LOUNGE

An aesthetically pleasing Lounge layout sets the tone for guest's entire experience. Social and casual, while at the same time elegant and refined, the Lounge is an inviting open space that includes communal but also intimate settings.

- Multi functional furniture pieces
- Community areas and private seating areas
- Skillful use of colors and materials, different lighting compositions
- Live planting
- Unique found objects



VIENNA HOUSE BY WYNDHAM AMBER BALTIC MIEDZYZDROJE



VIENNA HOUSE BY WYNDHAM ANDEL'S BERLIN

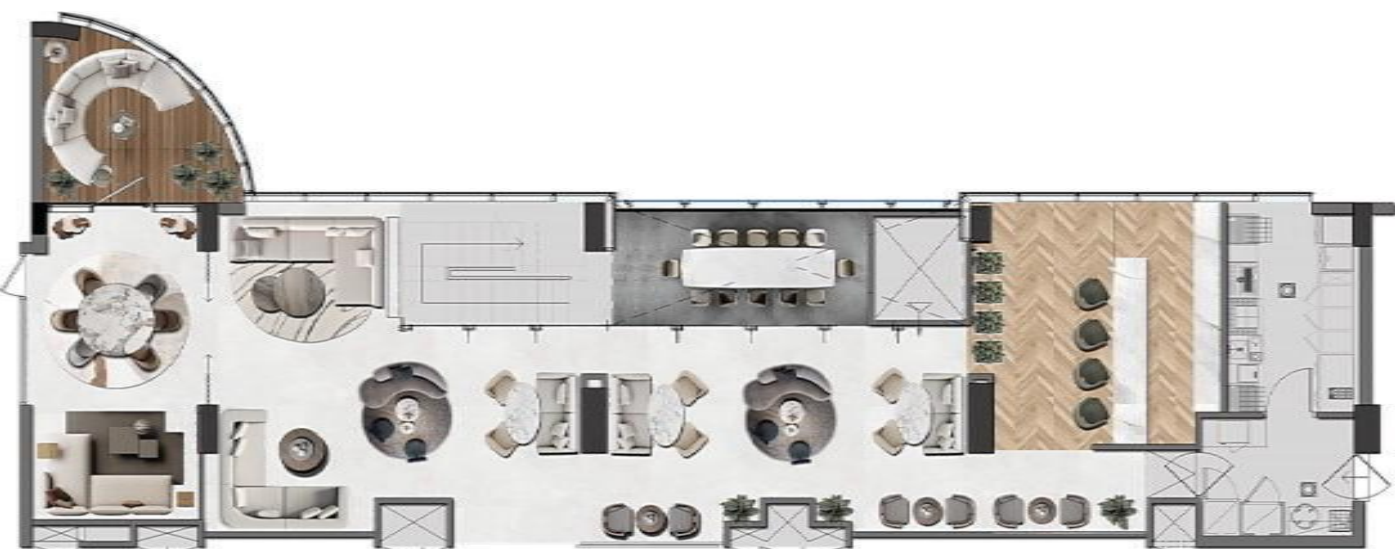


VIENNA HOUSE BY WYNDHAM DIPLOMAT PRAGUE

BAR/CAFE

Either combined with the Reception counter, or stand - alone, the Bar is the prominent part of the Public Areas. Its design intends to evoke a balance between old-world opulence and modern elegance and considers the following elements:

- Oval or long linear counter form
- Feature shelving above or behind the counter
- Darker colour palette with vivid colour pops
- Carpet design and lighting variations used to create individual areas
- Upholstered seating in different arrangements - booths, banquettes, poseur tables



RESTAURANT

Unique restaurants with compelling F&B concepts, are developed following these key elements:

- Deliberate use of timeless materials
- Modern and innovative partition design that can provide privacy and define areas
- Varied seating arrangements in a mix of low, med and high seating
- Practical furniture – style buffet counters in all day dining restaurants that serve breakfast
- The buffet should be concealed after breakfast time or should consist of multi functional pieces that adapt perfectly to any set up of the restaurant
- Feature shelving for accessories that bring narrative



VIENNA HOUSE BY WYNDHAM ANDEL'S BERLIN



VIENNA HOUSE BY WYNDHAM BRAUNSCHWEIG



VIENNA HOUSE BY WYNDHAM MOKOTOW WARSAW

TYPICAL ROOM

The Guestrooms follow the overall design direction, playing an important role in the storytelling:

- Various room types with different color palettes and furnishings
- Unique design with easy to adapt elements
- Use of rich in texture materials; concrete steel, wood leather; genuine materials only
- Bespoke lighting features
- Smartly located electrical outlets for ease of charging and laptop use

Defined by simplicity and quiet elegance, the bathrooms are designed to be the little luxury corner of the guestroom considering the following key elements:

- contemporary sanitary fittings
- timeless finishes
- design touches, reflecting guestroom's interior



VIENNA HOUSE BY WYNDHAM ANDELZ LODZ



VIENNA HOUSE BY WYNDHAM DIPLOMAT PRAGUE

GUESTROOM



VIENNA HOUSE BY WYNDHAM ANDEL'S LODZ



VIENNA HOUSE BY WYNDHAM ANDEL'S BERLIN



VIENNA HOUSE BY WYNDHAM ERNST LEITZ WETZLAR



VIENNA HOUSE BY WYNDHAM AMBER BALTIC MIEDZYZDROJE



VIENNA HOUSE BY WYNDHAM WARSAW

BATHROOM



VIENNA HOUSE BY WYNDHAM AMBER BALTIC MIEDZYZDROJE



VIENNA HOUSE BY WYNDHAM ZUR BLEICHE SCHAFFHAUSEN



VIENNA HOUSE BY WYNDHAM THÜRINGER HOF EISENACH



VIENNA HOUSE BY WYNDHAM MQ KRONBERG

WYNDHAM REWARDS

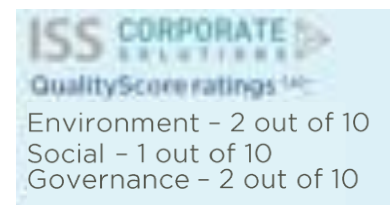
The largest hotel franchising company that opens nearly two hotels every day across the world. Our global size and scale is unequalled by anyone in the hospitality industry.

APPROX.
122M
WYNDHAM
REWARDS
MEMBERS

NUMBER
1
HOTEL
REWARDS
PROGRAM

**WYNDHAM
REWARDS**

AWARDS AND RECOGNITION



PARTNERS











VIENNA HOUSE

BY WYNDHAM





WYNDHAM

HOTELS & RESORTS

REGISTRY COLLECTION HOTELS WYNDHAM GRAND DOLCE HOTELS AND RESORTS *esplendor* DAZZLER WYNDHAM waterwalk EXTENDED STAY BY WYNDHAM VIENNA HOUSE

TRYP BY WYNDHAM

TM TRADEMARK COLLECTION BY WYNDHAM

Altra ALL-INCLUSIVE

LA QUINTA

WINGATE BY WYNDHAM

WYNDHAM GARDEN

Hawthorn EXTENDED STAY

★★★ AmericInn

BAYMONT

RAMADA

RAMADA encore

MICROTEL BY WYNDHAM

DaysInn

Super 8

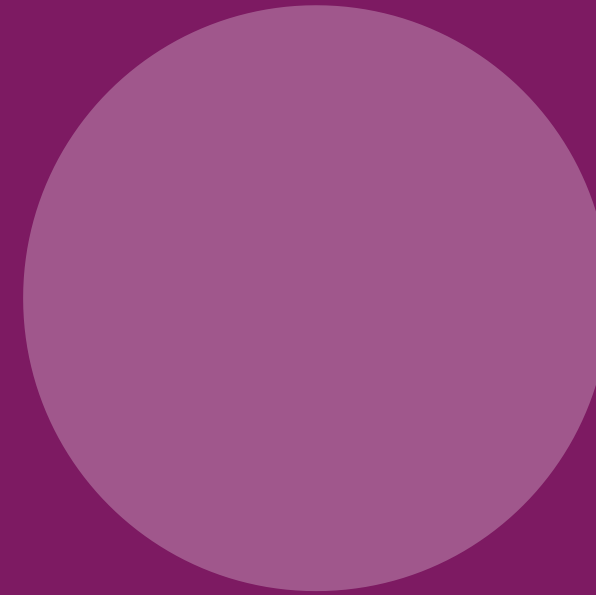
Howard Johnson

Travelodge

WYNDHAM REWARDS



EMEA DEVELOPMENT CONTACT



Name

Job Role

Region

Work

Email

Phone

Number



For more information, please visit:
WHRDevelopmentEMEA.com



VIENNA HOUSE
BY WYNDHAM

THANK
YOU

WHRdevelopmentEMEA.com